

The first publicly funded LEED certified project in South Carolina.



LEED®-NC Silver 2005

Building Statistics
 Completion Date: November 2004
 Cost: \$22 Million
 Size: 111,000 gross square feet
 Footprint: 74,000 square feet
 Construction Type: Institutional
 Use Group: Office and Laboratory
 Lot Size: 31 acres
 Occupancy: 200

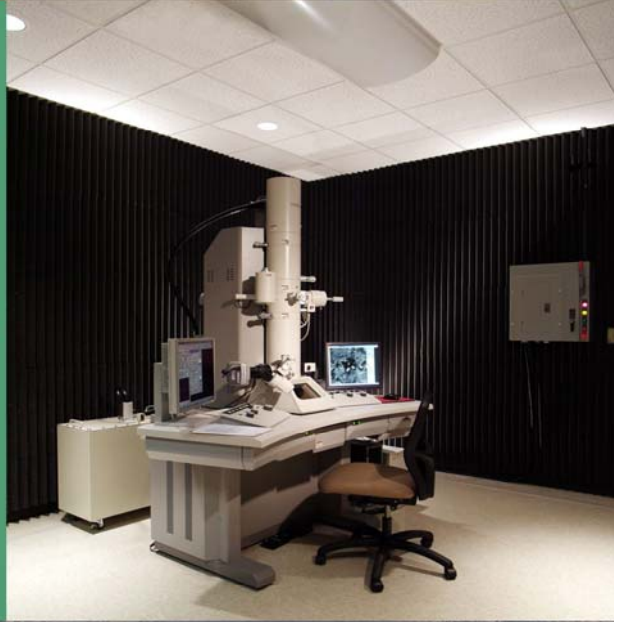


Project Highlights:

Sustainable Sites
Alternative Transportation: Two bus routes are located within 1/4 mile; bicycle racks and showers provided; Car pool special parking provided; shielded lights

Water Efficiency
Innovative Wastewater Technologies: All toilets are either low-flow or dual flush, saving 39% of the potable water typically used; water efficient landscape.

Energy and Atmosphere
Optimize Energy Performance: Exceeds ASHRAE 90.1-1999 by 45% using a high efficiency glazing system, high efficiency lighting with T5 lamps, increased chiller efficiency and a variable speed drive on one chiller.



Materials and Resources
Construction Waste Management: 83% of all construction waste was recycled including concrete, asphalt, paper, metal and cardboard. 524 Tons of waste recycled (1 million lbs)

Indoor Environmental Quality
Construction IAQ Management Plan: All ducts and permeable materials were protected against contamination during construction; all construction filtration media was replaced before occupancy. Also, CO2 monitors installed; low VOC materials and furnishings; daylighting of regularly occupied spaces



Sustainability Facts

Clemson University Advanced Materials Research Laboratory	
Building Use	Office & Laboratory
Location	Anderson, SC
Size	111,000 SF
Cost	\$22,000,000
LEED-NC Rating out of	69
Total Score	33
Sustainable Sites	7
Water Efficiency	4
Energy & Atmosphere	5
Materials & Resources	4
Indoor Environmental Quality	10
Innovation & Design Process	3
Certification Level	Silver
Energy Savings (kWh/yr, \$/yr)	\$241,800/yr*
Carbon Emissions Avoided (tons)	NA
Water Savings (gallons/yr, \$/yr)	220,500 gallons/yr*
Operations & Maintenance Savings (\$/yr)	NA
Productivity Enhancements (\$/yr)	NA
Natural Habitat Restored (acres)	22 acres

Project Team Profile	
Owner	Clemson University
Architect	IDC Architects
Engineers	IDC Architects
Contractor	Manhattan Construction Company
Landscape Architect	Arbor Engineering
Commissioning Agent	CH2M Hill

NA = "Not Applicable" or "Not Available"
 * Estimated amount based on project energy model

CLEMSON UNIVERSITY ADVANCED MATERIALS RESEARCH LABORATORY

